



SurgiDENT™

WWW.SURGIDEN.COM



Theramax™

an *evolution* in clinical therapy

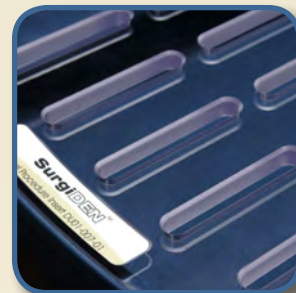
DESIGNED FOR PATIENT PREP, SURGERY, AND DENTISTRY

The Theramax™ Advantage

Unparalleled Clinic Versatility and Efficiency

The Theramax™ is a fully mobile wet station. Clinic space limitations often make non-moveable or traditional wall-mounted “lift-style” tables obstructive with no flexibility. Medical-grade locking castors on all our models facilitate patient transport to any room in the hospital. This allows the practitioner to take patients from anesthetic induction, through therapy, and all the way to recovery without physically moving the animal from the station. Cleanup afterwards is simple thanks to removable components that can be washed at any regular sink.

The Theramax™ comes in 2 base configurations: The SX model which is well suited for surgical and diagnostic work and the Theramax™ DX which adds dental functionality to the station with a fully integrated dental console, compressor, dual-liter water system, and handpieces. The SXs / DXs (small) models were created for those clinics in need of an **even more** compact station. With either base model, the practitioner has the choice of many additional features that further enhance productivity and practice growth. Available options include fluid IV poles, LED surgical spotlights, instrument or laptop trays, a piezo/ultrasonic scaler, and a host of accessories.



The ease-of-use and versatility of Theramax™ stations quickly translate into increased procedure speeds and practice revenues.

- Adjustable V-fold panels aid with quick patient positioning in dorsal recumbency, which can help practitioners visualize and clean all arcades and capture intraoral radiographs all without flipping the patient. The entire top surface can also be tilted which allows for greater speed and less fatigue in performing dental cleanings.†
- Robust lift and foot pedal controls provide hands-free height adjustment while maintaining optimal ergonomic operator positioning. Easily accommodate individual height preferences — seated or standing.
- The dental console [DX / DXs models] stores underneath the table and folds out via articulating arms. This helps prevent accidental bumps during patient induction and streamlines the station during transport.
- Dual 1.5-liter reservoir self-contained clean water system boosts productivity and means more dental procedure time between refills.
- The basin, grill, and “V” trough are easily removed for cleaning at any sink. This eliminates the need for expensive fixed plumbing or an under table pail which can interfere with the operator when seated.
- High-Impact grill and ABS plastic basin ensure extreme durability in protecting against accidental drops and bumps. Variably sized ported openings within the grill allow for effective fluid run-off and containment in the basin during procedures.

Theramax™

Mobile Surgical / Dental Wet Station

Surgiden™ is proud to announce a revolutionary new veterinary lift table combining mobility, multifunctional use, and practicality all within a small footprint space-saving design. Designed by a veterinarian with over 35 years professional experience, the Theramax™ surgical / dental wet procedures station is the first of its kind that offers this comprehensive versatility. As a hybrid veterinary surgical / wet-prep table, positioning animals for skull radiography, dental therapy, surgery, or routine ear flushing all become effortless. True mobility means no-more dedicating precious clinic space around cumbersome “fix-mounted” surgical or dental equipment. The Theramax™ is a self-contained option-expandable surgical / dental solution that grows as your business needs do.

All Models Feature :

- Compact and integrated design that maximizes space efficiency and functionality
- Ergonomic variable-height adjustment for seated or standing procedural work.
- Electronic medical-grade lift motor for smooth & quiet operation
- Medical-grade lockable castors for easy placement or use in multiple rooms
- Removable wet basin and drainage conduit for easy cleaning
- Articulating arm with instrument / laptop tray attachment
- Adjustable 0°/15°/30°/45°/60° stainless steel V-fold panels for patient positioning
- Adjustable 0°/2°/7° horizontal tilt of tabletop †
- 4 easily adjustable tie-down restraint anchors
- Industrial-grade multi-position foot control switch for height adjustment
- Built-in supply storage under table [Surgical SX / SXs models only]
- Multi-outlet power connectivity
- 250 lb. lift capacity
- Ultra-low heat LED diagnostic surgical spotlight ‡
- Telescoping IV Pole attachment ‡

Dental Models (DX / DXs) Feature :

- Integrated quiet dental compressor
- Dual 1.5-liter clean water delivery system
- **Dental Console** on articulating arms featuring an automatic-control head with three-way air/water syringe and up to three handpiece configurations. **Includes handpieces!**
- Easily accessible compressor tank release valve
- Dual High-speed drills with / without Fiber Optic light sources ‡
- Piezo / Ultrasonic scaler configuration ‡

† Full-size [SX / DX] models only

‡ Available As Options

Specifications:

	US	GLOBAL
Top Dimensions [SX / DX models]	65.25" L x 18.5" W	166 x 47 cm
Top Dimensions [SXs / DXs models]	48" L x 18.5" W	122 x 47 cm
Electronically Height Adjustable from	27" - 43"	69 - 110 cm
Lifting Capacity	250 lb	113 kg
Power Supply	120V / 60Hz	230V / 50Hz

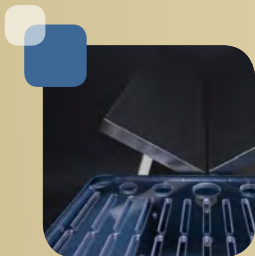
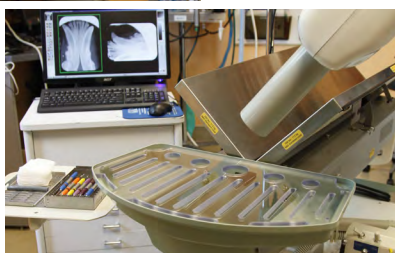


Theramax™
Mobile Surgical / Dental Wet Station

*dental model shown with accessories

 **EASY CLEANUP**
STAINLESS STEEL PANELS
WITH REMOVABLE BASIN

QUESTIONS? CALL 1-877-938-PREP (7737)



Theramax[™] Mobile Surgical / Dental Wet Station

The Theramax[™] is the **first hybrid solution** to meet the challenges of both the surgical and dental needs in today's modern veterinary practice.



WWW.SURGIDEN.COM | 1-877-938-PREP (7737)

All Rights Reserved ©Surgiden, LLC